



Welcome to Patapsco!



Building a Strong Foundation for  
High School and Beyond



# At Patapsco We Are:

## #OnePatapsco

A place where  
everyone is  
**VALUED** and  
**IMPORTANT**





# Agenda

- MIDDLE SCHOOL REQUIREMENTS
- SCHEDULING OPTIONS
- GT PROGRAMS
- EASING INTO MIDDLE SCHOOL







The level of academic achievement that students attain by eighth grade has a larger impact on their college and career readiness than anything that happens academically in high school.

# STRIKING A BALANCE

- COURSE PLACEMENTS
- RIGOR
- PERSONAL INTERESTS
- STUDENT SUCCESS
- THEIR FUTURE V. OUR PRESENT
- CLUBS/INTRAMURALS





All students are  
enrolled in seven  
50-minute classes every day





# In Middle School ALL Students must take:

- ❑ English
- ❑ Mathematics
- ❑ Social Studies
- ❑ Science



Aligned to Maryland's College & Career-Ready Standards

# In Middle School ALL Students must take:

- ❑ Health Education (6-8)
- ❑ Physical Education (6-8)
- ❑ Careers (6)
- ❑ Family and Consumer Science (FACS) (7-8)
- ❑ Technology Education (6, 7, or 8)
- ❑ Fine Arts (General Music and /or Art) (6-8)

*All meet COMAR requirements set by  
Code of Maryland Regulations*

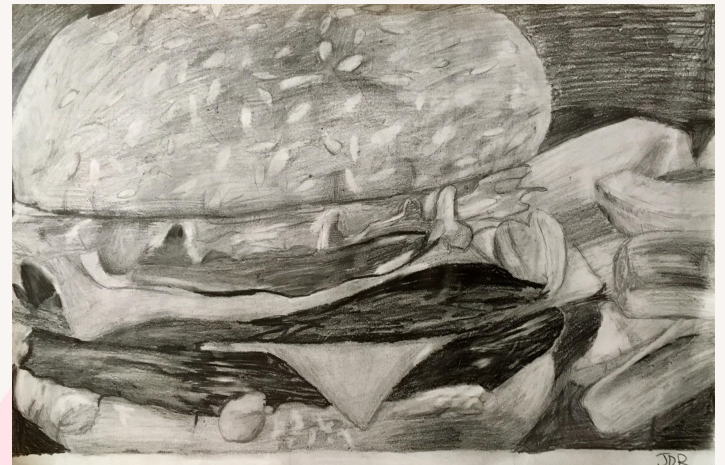


# Students May Take...

GT RESEARCH

READING OR MATH INTERVENTION

*RECOMMENDED FOR SOME STUDENTS*





# OPTIONS: Performance Ensembles

Band – Chorus – Orchestra

- Year-long class
- 50 minute daily ensemble rehearsal and 50 minute weekly sectional (B & O)
- Ensembles are ability-based
- Music teachers will contact elementary programs to schedule meetings & auditions



# Who decides the options?

Students may be recommended to take a reading/math instructional seminar.

Students eligible for GT Research course can elect to take it in place of RA (semester long)

Performance Ensembles are family choice.

Related Arts and Reading Modules are assigned, not selected.

Some choices are limited by scheduling needs and availability of seats.



# BASIC SCHEDULE

<b>Time</b>	<b>Pd</b>	<b>6th Grade</b>
8:05 – 8:13	HR	Homeroom
8:15 – 9:05	1	Related Arts
9:07- 9:57	2	Related Arts
9:59 – 10:49	3	Academic/Seminar
10:51 – 11:41	4	Academic/Seminar
11:43- 12:34	5	Academic/Seminar
12:36 – 1:06		Lunch
1:08 – 1:58	6	Academic/Seminar
2:00 – 2:50	7	Academic/Seminar



# HOW IT ALL FITS!

## OVERVIEW:

- EVERY STUDENT HAS 7 FIFTY-MINUTE CLASSES EACH DAY



# Patapsco MS Schedule

OVERVIEW:

EVERY STUDENT RECEIVES DAILY

INSTRUCTION IN:

- ENGLISH LANGUAGE ARTS (ELA)
- MATHEMATICS
- SOCIAL STUDIES
- SCIENCE



# BASIC SCHEDULE

Time	Pd	6th Grade
8:05 – 8:13	HR	Homeroom
8:15 – 9:05	1	Related Arts
9:07- 9:57	2	Related Arts
9:59 – 10:49	3	Academic/Seminar ✓
10:51 – 11:41	4	Academic/Seminar ✓
11:43- 12:34	5	Academic/Seminar ✓
12:36 – 1:06		Lunch
1:08 – 1:58	6	Academic/Seminar ✓
2:00 – 2:50	7	Academic/Seminar



# Patapsco MS Schedule

## OVERVIEW:

Take away those 4 common classes, and each student has:

- 3 classes left per day



# Patapsco MS Schedule

## OVERVIEW:

EVERY STUDENT HAS 2 RELATED ARTS BLOCKS PER DAY WHICH COULD INCLUDE:

- PE
- HEALTH
- ART
- GENERAL MUSIC
- FACS
- TECH ED
- CAREERS
- GT RESEARCH
- MATH SEMINAR



# BASIC SCHEDULE

Time	Pd	6th Grade
8:05 – 8:13	HR	Homeroom
8:15 – 9:05	1	Related Arts ✓
9:07- 9:57	2	Related Arts ✓
9:59 – 10:49	3	Academic/Seminar ✓
10:51 – 11:41	4	Academic/Seminar ✓
11:43- 12:34	5	Academic/Seminar ✓
12:36 – 1:06		Lunch
1:08 – 1:58	6	Academic/Seminar ✓
2:00 – 2:50	7	Academic/Seminar

# Patapsco MS Schedule

## OVERVIEW:

Take away those 2 related arts blocks, and each student has:

- 1 class left per day





# BASIC SCHEDULE

Time	Pd	6th Grade
8:05 – 8:13	HR	Homeroom
8:15 – 9:05	1	Related Arts ✓
9:07- 9:57	2	Related Arts ✓
9:59 – 10:49	3	Academic/Seminar ✓
10:51 – 11:41	4	Academic/Seminar ✓
11:43- 12:34	5	Academic/Seminar ✓
12:36 – 1:06		Lunch
1:08 – 1:58	6	Academic/Seminar ✓
2:00 – 2:50	7	Academic/Seminar

# Patapsco MS Schedule

## OVERVIEW:

STUDENTS MUST TAKE ONE OF THE FOLLOWING:

- Innovation & Inquiry Reading Modules (full year)- **default class**
- Instructional Intervention Seminars  
*for students performing below grade-level in reading*
  - Reading intervention seminar
  - ELL support
- Band
- Orchestra
- Chorus



# Special Education Services

- WILL HAVE A TRANSITION MEETING TOGETHER AT THE ELEMENTARY SCHOOL TO REVIEW IEP/NEEDS
- CAN MAKE CHANGES TO SCHEDULE AT ANY POINT
- COLLABORATIVE APPROACH TO OFFERING SERVICES
- MEET-GREET WILL BE OFFERED PRIOR TO SCHOOL STARTING



# G/T (Gifted and Talented) Content Classes



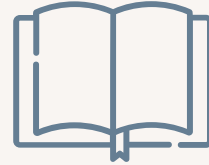
- Accelerated and/or Enriched Curriculum
- Advanced-Level Content
- Inquiry-Based Instruction
- Application of Knowledge



**G/T Math**



**G/T Science**



Middle School  
G/T  
Classes

**G/T English**



**G/T Social Studies**

# G/T Mathematics

Provides an accelerated and enriched sequence that follows a curriculum of concepts at least two years above the general education curriculum.

- 6 - Pre-Algebra G/T
- 7 - Algebra I G/T
- 8 - Geometry G/T



# G/T English

Extends the Maryland College and Career Ready Standards for English Language Arts through

- an accelerated pace,
- reading and analyzing challenging and complex literature and literary nonfiction independently,
- writing a variety of interpretive, and analytical pieces, and conducting independent research.



Differentiated tasks and texts are included at all grade levels.

# G/T Social Studies

Provides an enriched and accelerated curriculum, including differentiated objectives, where students explore civic and cultural principles and engage in inquiries that focus on essential, related questions.

6 - Geography and World Cultures G/T

7 - Geography and World Cultures G/T

8 - United States History G/T





# G/T Science

An enriched and accelerated curriculum where students explore cross-cutting concepts, as well as science and engineering practices.

6 - Earth Science G/T

7 - Life Science G/T

8- Physical Science G/T



# Placement Process For Middle School G/T – 5th Grade

## 5<sup>th</sup> Grade

- CogAT administered to ALL students in December.
- All students reviewed as part of G/T Placement Process.
- Feb.- GT Placement Committee decisions, including CogAT scores and GT Research Class letters, are mailed to parents of fifth grade students.



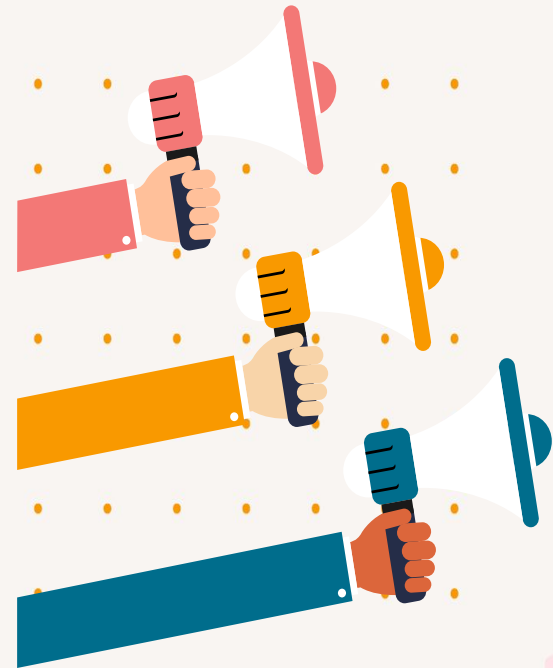
# Parental Input in Placement Process

IF AFTER REVIEWING THE PLACEMENT COMMITTEE'S PROFESSIONAL RECOMMENDATION, PARENTS/GUARDIANS STILL WISH TO ENROLL THEIR STUDENTS IN ONE OR MORE G/T CLASSES, THEY MAY COMPLETE THE COURSE PLACEMENT REVIEW FORM.



# Who can initiate the placement process in middle school?

- Families
- Teachers
- Students





# Measures Included in Placement Process

- ABILITY MEASURE (COGAT OR SCAT)
- STANDARDIZED ASSESSMENTS (MAP, MCAP)
- STUDENT WORK SAMPLES
  - INTERPRETATION
  - CRITIQUE
  - ANALYSIS
  - CREATIVE PROBLEM SOLVING
- STUDENT GRADES ON ASSIGNMENTS REQUIRING CRITICAL, ANALYTICAL, AND/OR CREATIVE THINKING
- DOCUMENTATION FROM FAMILIES



# Middle School GT Research Class

- Authentic research to address real-world problem
- For students enrolled in G/T Math and G/T English based upon G/T Placement Committee recommendations







# G/T Instructional Seminars





# Talent Development Offerings: G/T Instructional Seminars



Instruction in  
Advanced-Level  
Skills



Open to All  
Interested  
Students



Creative  
Production or  
Inquiry



# Where can I find out about G/T Instructional Seminars at my child's school?

## **Seminars offered for the SY 2015-2016:**

### **Television Production (HCTV)**

HCTV crewmembers create a daily television broadcast using advanced level journalism and technology skills. Must be able to arrive at school by 7:20 AM.

### **Middle School Book Club**

Book Club members meet once a month at lunchtime to discuss a pre-selected book. There is also a monthly countywide meeting at the Howard County Library Miller Branch for a thought-provoking discussion of the high-quality literature.

### **Environmental Awareness Committee (Green Team)**

Team members develop their interest in the environment, help school recycling and energy conservations efforts, and promote awareness of environmental issues in the school and community. Team members will also be responsible for submitting an entry in the Environmental Film Festival. Members meet every other week at lunchtime.

### **Lego Robotics**

Using the LEGO Mindstorm robotics' kit, students have the opportunity to develop skills in designing and programming a LEGO robot. Must be able to meet afterschool from 3:00-4:15 on Wednesdays through December.

### **School Newspaper**

Reporters needed! Including, sports reporters, fashion reporters, and entertainment reporters! Ever wonder what it would be like to write the news, not create the news. This seminar is for students who love writing and journalism. This year we will create a school web-based newspaper and newsletter, practicing and editing writing as well.

# Opportunities for Parent Engagement

- HCPSS G/T Website:  
[www.hcpss.org/academics/gt](http://www.hcpss.org/academics/gt)
- G/T Parent Academies
- HCPSS News for G/T Program . . . . .
- Information . . . . .
- HCPSS\_GT Twitter . . . . .



# Contact Information

- SAMANTHA GLASS
- 410-313-2848 
- SAMANTHA\_GLASS@HCPSS.ORG 



# Get Connected:

PMS.HCPSS.ORG

PM GOOGLE CALENDAR

FACEBOOK.COM/PMS.HCPSS.ORG

TWITTER: @HCPSS\_PMS

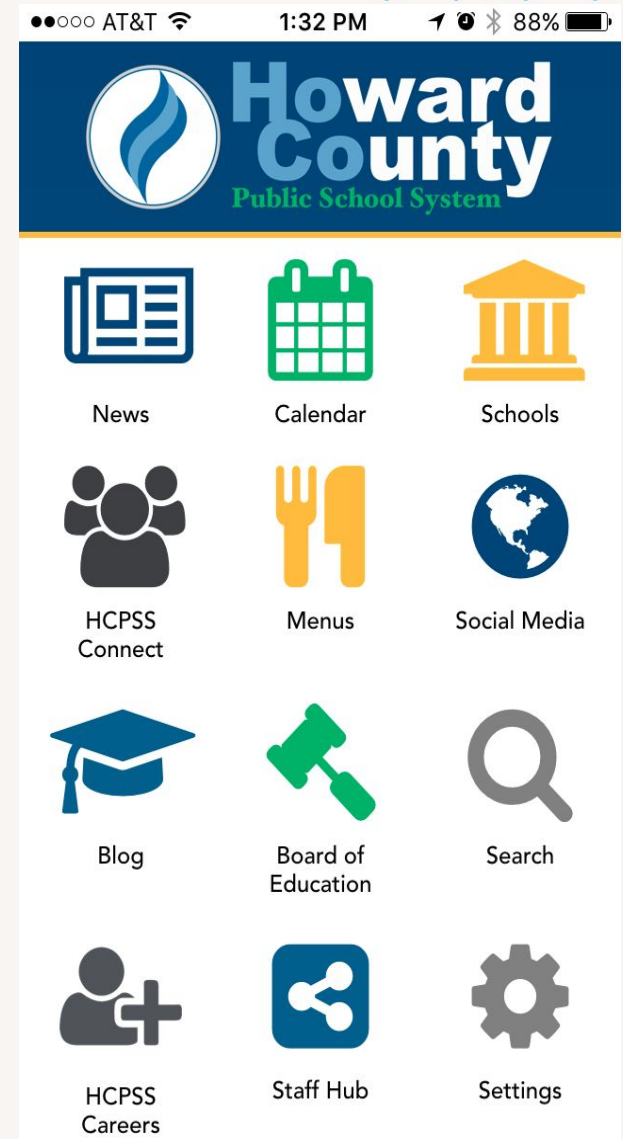
INSTAGRAM: PATAPSCOMS

PATAPSCOPTA.WEEBLY.COM/

FACEBOOK.COM/PATAPSCOPTA/

APP STORE: HCPSS APP

SCHOOL MESSENGER (COMMUNITY MEMBER)





# Save the Date:

OUTDOOR EDUCATION -

OCTOBER 21-23RD

LUGGAGE DROP OFF OCT 20TH

APPROXIMATE COST +/- \$175

ADDITIONAL \$5 FOR TSHIRT!

CHAPERONES NEEDED

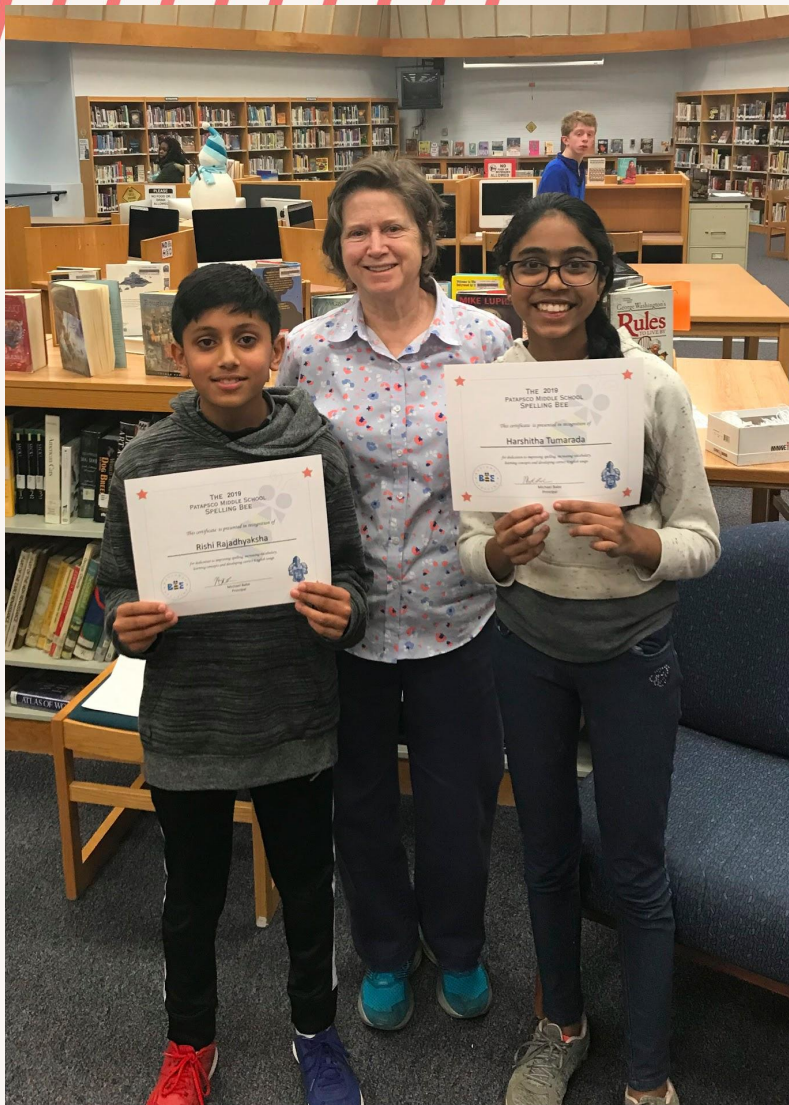
(YOU WON'T REGRET IT)



TAKE CARE OF HEALTH/MEDICAL FORMS IN  
ADVANCE

PARENT INFO NIGHT IN SEPTEMBER BEFORE  
BACK TO SCHOOL NIGHT





The earlier a student develops important academically related behaviors, the more likely these behaviors are to become a habit.

Source: The Forgotten Middle: Ensuring that All Students Are On Target For College and Career Readiness Before High School



# 5th Grade Middle School Visit



MAY 19, 2020