

The crest of Patapsco Middle School is centered in the background. It features a blue shield with a white border. Inside the shield is a stylized white 'P' and 'M' intertwined. Above the shield is a blue helmet with a white plume. The shield is flanked by two blue lions. The entire crest is set against a solid blue background.

# **Welcome to Patapsco Middle School**

# Agenda

- Welcome
- Transition to Middle School
- Middle School Scheduling
- G/T Programs
- Settling into Middle School

**Meet the Knights**





h

Kelly Hearn, Principal

Theresa Barber-Wehrman, Assistant Principal

Jennifer Meikrantz, 6th Grade Team Leader

Georgia Whyte, English Language Development Teacher

Grace Ruly, GT Resource Teacher

Julia D'Anna, Special Education Team Leader

Erin Shurtleff, School Counselor  
(Last names: A-L)

Morgan Kempthorn, School Counselor  
(Last names: M-Z)

Annie Goldthrite, School Psychologist

Ashley Anderson, Hispanic Student Liaison







We want to  
inspire and  
engage every  
student to  
discover and  
reach their  
full potential.

# SYSTEM PRIORITIES



## EQUITY FRAMEWORK

Belonging  
Instructional Excellence  
Opportunity and Access  
Engaged and Inspired Learners

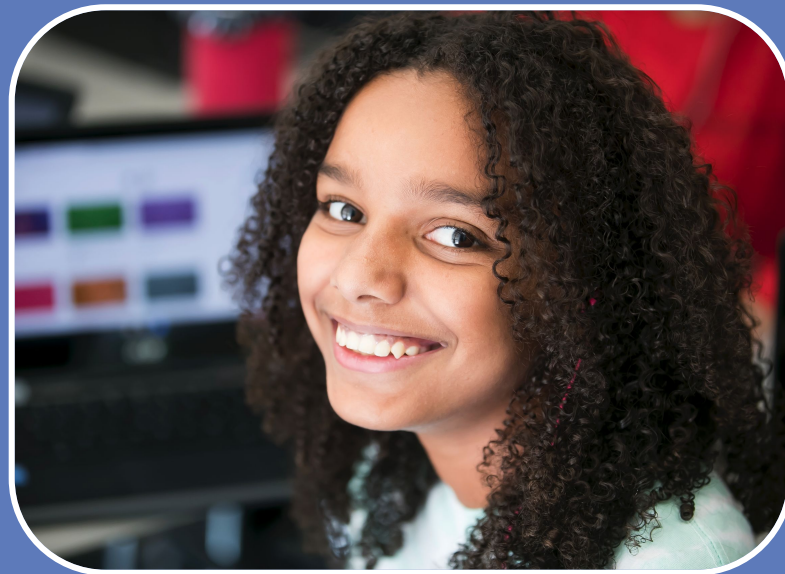
## STRATEGIC PRIORITIES

Excellent Staff  
Early Childhood  
Career Pathways  
Customized Instruction  
Accountable Operations

## FOCUS AREAS

Attendance  
Proficient in Math  
Reading by Grade 3  
College and Career Ready  
Effective Discipline Practices

Middle school is a time when students discover interests, skills, strengths and begin to connect these attributes to postsecondary pathways and prepare students for the future.



# College & Career Readiness Framework

## Self Awareness

### Who am I?

Students shall acquire and apply self-knowledge to develop personal learning and career goals.

## Career Awareness

### What Careers Exist?

Students shall use the Maryland Career Clusters and career pathways including Career and Technology Education (CTE) programs of student to understand their relationship to educational achievement and lifelong learning.

## Career Exploration

### What Careers Interest Me?

Students shall assess career clusters and related career pathways including Career Technology Education (CTE) programs of study to develop an academic and career path.

# College & Career Readiness Framework

## Career Preparation

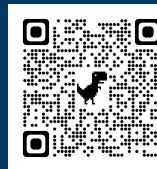
### How Does My Pathway Connect to a Career?

Students shall prepare for post-secondary and career success through a sequenced academic and technical program of study and related workplace experiences.

## Career Training

### How Do I Prepare for a Career?

Students shall demonstrate skills to secure, maintain, and advance in employment



# Navigating Middle School

WORKING TOGETHER  
FOR A SUCCESSFUL TRANSITION  
TO MIDDLE SCHOOL





Middle school is a defining point for students to gain the knowledge and skills needed to be successful in postsecondary pathways.

But don't worry, there are so many people here to support them!



# Transitioning to Middle School





## How can I help with my child's transition to middle school?

- Reassure students that the grown ups know what they're going through and that we will help
- Attend student orientation in August so they can see their classrooms and open their lockers
- Have them learn their bus number

### Note about supplies:

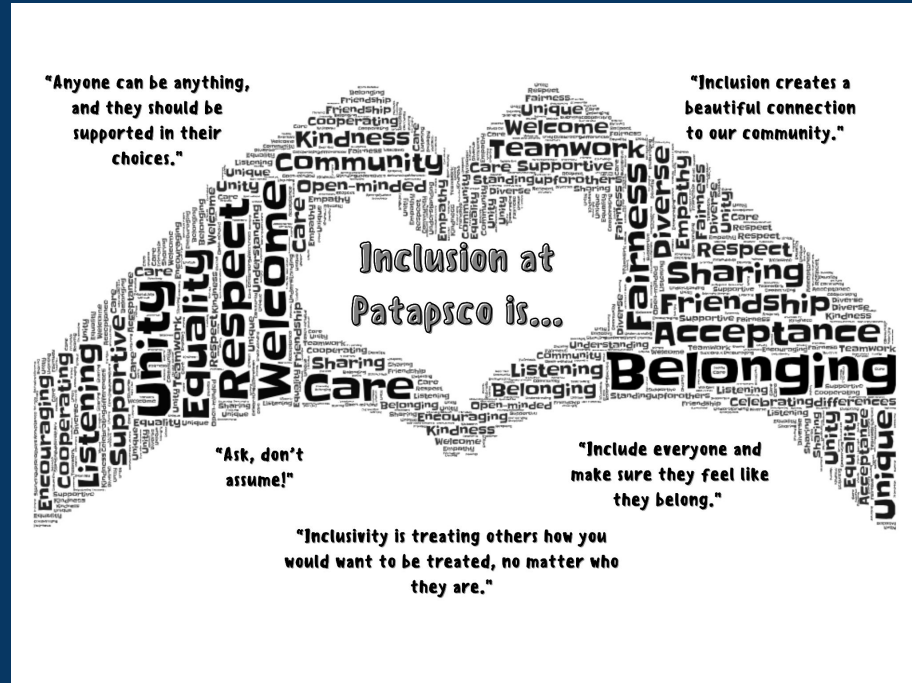
- Binder with dividers for all classes
- Weekly Planner/Agenda Book
- Chromebook
- Supply list will be released in the spring

# Special Education Intervention Courses (IEP)

Middle School and Elementary Special Education teams will be working together to ensure a smooth transition to 6th grade for students with IEPs.

If you have any questions or concerns before then, please reach out to Julia D'Anna at [julia\\_danna@hcpss.org](mailto:julia_danna@hcpss.org)

What a great day to be a Patapsco Knight!



# Section 504 Plan

At the middle school level, school counselors, school psychologists and school nurses serve as the case managers for students with Section 504 plans.

Parents of 6th grade students with Section 504 plans will receive a communication from their child's assigned case manager in August.



# Multi-Language Learner Intervention Courses

Middle School and Elementary English Language Development (ELD) teachers will be working together to ensure that students are placed appropriately for sixth grade.

If you have any questions or concerns, please reach out to Ms. Whyte at [Georgia\\_Whyte@hcpss.org](mailto:Georgia_Whyte@hcpss.org)



# The Middle School Schedule



**All students are enrolled in seven 50-minute classes four days a week. One day a week students have an alternate schedule that includes flex time (Knight Time).**



## PMS Daily Bell Schedule

2025-2026

	6th	7th	8th
<b>8:20-8:25</b>	Breakfast	Breakfast	Breakfast
<b>8:30-9:24</b>	Period 1	Period 1	Period 1
<b>9:27-10:17</b>	Period 2	Period 2	Period 2
<b>10:20 - 11:10</b>	Period 3	Period 3	Period 3
	Lunch <b>11:13-11:43</b>	Period 4 <b>11:13-12:03</b>	Period 4 <b>11:13-12:03</b>
	Period 4 <b>11:46-12:36</b>	Lunch <b>12:06 - 12:36</b>	Period 5 <b>12:06-12:56</b>
	Period 5 <b>12:39-1:29</b>	Period 5 <b>12:39-1:29</b>	Lunch <b>12:59-1:29</b>
<b>1:32-2:22</b>	Period 6	Period 6	Period 6
<b>2:25 - 3:15</b>	Period 7	Period 7	Period 7



## PMS Knight Time Bell Schedule

**2025-2026**

	6th	7th	8th
<b>8:20-8:25</b>	Breakfast	Breakfast	Breakfast
<b>8:30-9:19</b>	Period 1	Period 1	Period 1
<b>9:22 - 9:52</b>	Knight Time	Knight Time	Knight Time
<b>9:55-10:42</b>	Period 2	Period 2	Period 2
<b>10:45 - 11:30</b>	Period 3	Period 3	Period 3
<b>11:33-1:39</b>	Lunch <b>11:33-12:03</b>	Period 4 <b>11:33-12:18</b>	Period 4 <b>11:33-12:18</b>
	Period 4 <b>12:06-12:51</b>	Lunch <b>12:21-12:51</b>	Period 5 <b>12:21-1:06</b>
	Period 5 <b>12:54-1:39</b>	Period 5 <b>12:54-1:39</b>	Lunch <b>1:09-1:39</b>
<b>1:42-2:27</b>	Period 6	Period 6	Period 6
<b>2:30 - 3:15</b>	Period 7	Period 7	Period 7



# Grade 6 Example Schedule

Course 1	English
Course 2	Mathematics
Course 3	Science
Course 4	Social Studies
Course 5	Physical Education/Health/Tech
Course 6 (Fine Art Choice)	<b>Band, Chorus, Orchestra (year-long course)</b> OR <b>Art, Music, Theater, and Family and Consumer Science (FACS)</b> (each one quarter)
Course 7 (Elective/Intervention)	<b>1 Quarter each-</b> Digital Citizenship, 21st Century Learning, Boost Your Brain, Reader's and Writer's Cafe <b>2 Quarters -</b> GT Research <b>Year-long -</b> ESOL, Special Education/Mathematics/Reading Intervention

**(Courses 1-5) In accordance with state requirements, each year middle school students receive instruction in the following areas:**

- English Language Arts
- Science
- Social Studies
- Mathematics
- Physical Education (2 quarters)
- Health (1 quarter)
- Technology (1 quarter)



**During their middle school experience, students are also required to receive instruction in the following areas:**

- Technology
- Financial Literacy
- Careers



## Fine Arts Options

**Students in grade 6 will choose from the following options:**

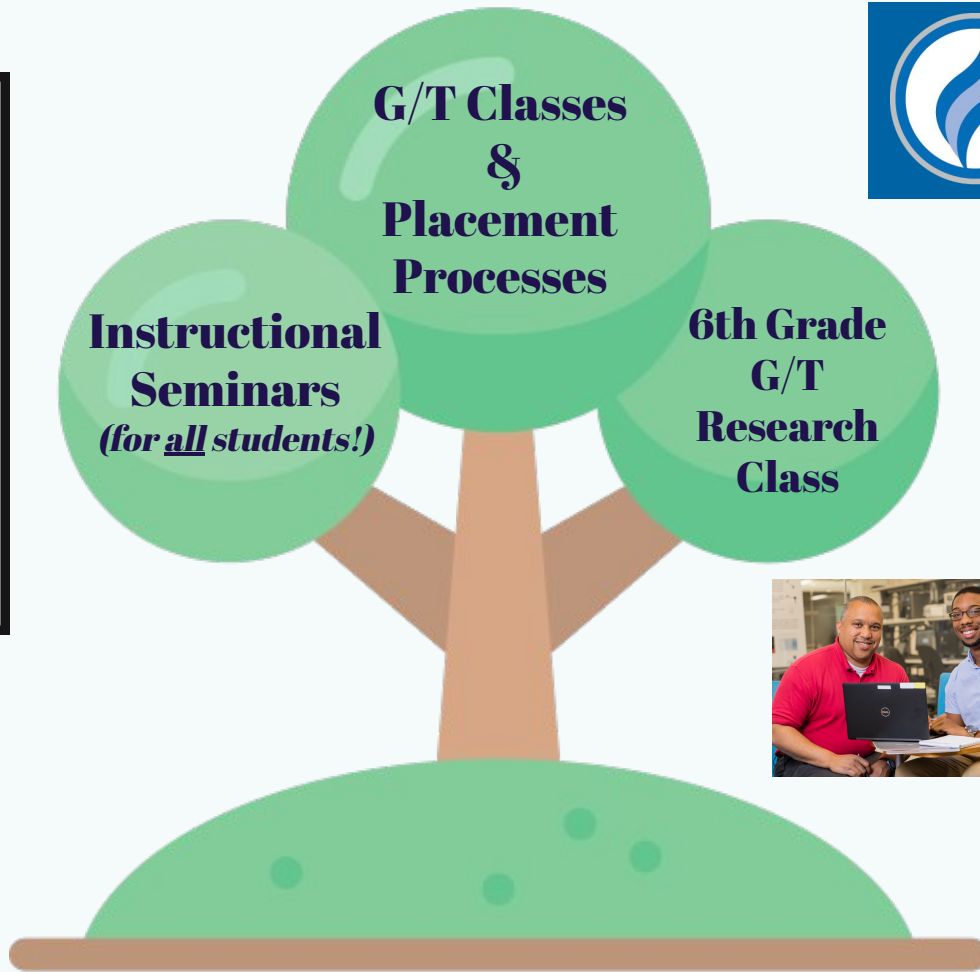


- Band
- Chorus
- Orchestra
- Art/General Music/Theater Arts combination

# Additional Courses Added to Your Schedule

- Family and Consumer Science
- G/T Research or Seminars/Interventions in reading and/or mathematics
- Reader's and Writer's Workshop
- Boost Your Brain
- 21st Century Learning
- Additional Fine Arts Classes
- Other Elective Course Offerings





**G/T Program at Patapsco Middle School**

# Talent Development Offerings: Instructional Seminars



Open to ALL  
Interested Students



Instruction in  
Advanced-Level  
Skills/Interests



Creative Production  
or Inquiry

# **Where can I find out about Instructional Seminars at my child's school?**

- Presentation in student content classes at the start of the school year
- Morning Announcements, Fliers, Bulletin Board
- Student Canvas page
- Grace Ruly: GT Resource Teacher



# THIS YEAR'S SEMINARS

- TELEVISION PRODUCTION/ KNIGHT NEWS NETWORK (KNN)
- MIDDLE SCHOOL BOOK CLUB
- BEGINNING/ADVANCED DEBATE
- CREATIVE WRITING
- MATH LOGIC
- PHOTOGRAPHY
- JOURNALISM
- ENVIRONMENTAL SCIENCE



# Middle School G/T Classes



G/T  
Math



G/T  
English



G/T  
Science



G/T  
Social  
Studies



# G/T Mathematics

Provides an accelerated and enriched sequence that follows a curriculum of concepts at least two years above the general education curriculum.

- 6 - Pre-Algebra G/T
- 7 – Algebra I G/T
- 8 - Geometry G/T

# Accelerated G/T Mathematics



The Accelerated G/T Mathematics Program is provided for students who demonstrate a need for further acceleration beyond the G/T mathematics sequence.

- 6 - Algebra 1 G/T
- 7 - Geometry G/T
- 8 - Algebra 2 G/T

# Accelerated G/T Math Placement

Students are automatically review for placement in this program by G/T Office staff based upon the following initial criteria:

- 99th percentile for both the CogAT Quantitative and Quantitative-Nonverbal composite
- 99th percentile MAP-Math scores
- 4th grade MCAP performance of 810 or higher
- outstanding performance in 5th grade G/T Mathematics.

Notifications of placement are sent in late April.



# G/T English

Extends the English Language Arts curriculum through

- an accelerated pace,
- more advanced critical reading, writing, and thinking demands; and,
- extensions within each unit.

Differentiated tasks and texts are included at all grade levels.



# G/T Science

An enriched and accelerated curriculum where students explore cross-cutting concepts, as well as science and engineering practices.

6 - Earth Science G/T

7 - Life Science G/T

8 - Physical Science G/T



# G/T Social Studies

Provides an enriched and accelerated curriculum with embedded curricular extensions, where students explore civic and cultural principles and engage in inquiries that focus on essential, related questions.

6 – Geography and World Cultures G/T

7 – Geography and World Cultures G/T

8 – United States History G/T



# Placement Process for Middle School G/T Classes


## **5<sup>th</sup> Grade and Throughout Middle School**

- ALL students reviewed for placement
- Multiple criteria examined (CogAT, MAP, MCAP, class performance)
- CogAT administered to all students in 3rd grade and all new HCPSS students in grades 4-8

# Family Input in Placement Process

Families may enroll middle school students in G/T classes via the Course Request Process via HCPSS Connect if the desired course differs from the school recommendation.

PARENT ACCESS TO STUDENT INFORMATION & CLASSWORK



HCPSS Connect

HCPSS Connect provides access to a variety of student information and classroom instructional tools offering personalized communication and timely, relevant and easily accessible information relating to your student.

# Who can initiate the placement process in middle school?



- Families
- Teachers
- Students

# Middle School G/T Research Class



- Authentic research to address real-world problem
- For students enrolled in G/T English along with Math 7 or G/T Math based upon G/T Placement Committee recommendations

# Research

- Original
- Primary Research Methods
- Authentic Product
- Authentic Audience
- Contribution to the Community/Field



# Opportunities for Family Engagement

- HCPSS G/T Website:  
<https://www.hcpss.org/academics/gifted-and-talented/>
- G/T Parent Academies
- HCPSS News for G/T Program Information

# Contact Information

- Grace Ruly
- (410) 313 - 2848
- [grace\\_ruly@hcpss.org](mailto:grace_ruly@hcpss.org)



# Finding the Right Balance Between

- Course Placements
- Rigor
- Personal Interests
- Student Success





**The earlier a student develops important academically-related behaviors, the more likely these behaviors are to become a habit.**



# Supporting Academic Behaviors

At Patapsco, staff and students:

- Start with the goal in mind
- Celebrate effort and achievement
- Engage in positive experiences each school day
- Create excitement for the future



# 3 Ways To Support The Whole Child

LearnED by Pearson



1. Teach kids that intelligence isn't fixed. They can grow their brains through lifelong learning.
2. Talk to students about college and/or potential career paths. Tell them you believe in them and in their success.
3. Keep the communication lines open - set aside time to regularly talk about feelings and friendships.

# Tips For Parents

- Talk to your child about school and how they are feeling.
- Work with your child to create routines around school preparation, HW, bedtime, and screen time.
- Encourage your child to be responsible, for example regularly checking Canvas.
- Acknowledge that all students will struggle at times and it is healthy to reach out for help.
- Take school attendance seriously.
- Build your student's confidence and identify areas of strength.



# Important Dates

Date	Activity
2/5/26- 2/18/26 (new dates)	<ul style="list-style-type: none"><li>• Course Recommendations for rising 6th graders available in Synergy for parents to review.</li><li>• Families will enter student course requests in Synergy no later than 2/18/26.</li></ul>
August 20, 2026 (tentative date)	New Student Orientation



thank  
you

**Any Questions?**